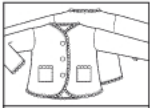


# Werkschrift



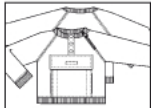
**1 VESTJE ●●**  
maten 50-56-62-68-74-80

zie pag. 11



**2 BROEKJE ●●**  
maten 50-56-62-68-74-80

zie pag. 10, 13



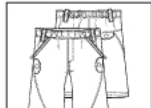
**3 SWEATER ●●●**  
maten 50-56-62-68-74-80

zie pag. 13



**4a BROEKJE ●●●**  
maten 68-74-80-86-92-98

zie pag. 63



**4b BROEKJE ●●●**  
maten 68-74-80-86-92-98

zie pag. 20



**5a JURK ●●**  
maten 68-74-80-86-92-98

zie pag. 63



**5b TOP ●●**  
maten 68-74-80-86-92-98

zie pag. 63



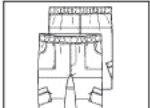
**6a VEST ●●●**  
maten 68-74-80-86-92-98

zie pag. 20



**6b JAS ●●●**  
maten 68-74-80-86-92-98

zie pag. 18



**7 BROEK ●●●**  
maten 68-74-80-86-92-98

zie pag. 18



**8ab ROK ●●**  
maten 104-110-116-122-128-134-140-146-152-158-164

zie pag. 5, 25, 73



**9 BROEK ●●●**  
maten 104-110-116-122-128-134

zie pag. 24



**10 JAS ●●●**  
maten 104-110-116-122-128-134

zie pag. 22



**11 JURK ●●**  
maten 104-110-116-122-128-134

zie pag. 24



**12a JURK ●●**  
maten 104-110-116-122-128-134

zie pag. 23



**12bc JURK ●●●**  
maten 104-110-116-122-128-134

zie pag. 6, 8, 71



**13a BROEK ●●●**  
maten 104-110-116-122-128-134

zie pag. 5, 70



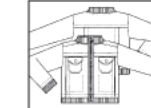
**13b BROEK ●●●**  
maten 104-110-116-122-128-134

zie pag. 8



**14 BLOES + LOSSE CAPUCHON ●●●**  
maten 104-110-116-122-128-134

zie pag. 5, 72



**15ab VEST ●●●**  
maten 104-110-116-122-128-134

zie pag. 6, 70



**16 COLBERT ●●●**  
maten 104-110-116-122-128-134

zie pag. 4, 6



**17a SALOPETTE ●●**  
maten 104-110-116-122-128-134

zie pag. 6



**17b BROEK ●●**  
maten 104-110-116-122-128-134

zie pag. 4, 70



**18a BROEK ●●●**  
maten 134-140-146-152-158-164

zie pag. 54



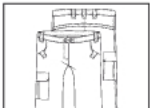
**18b BROEK ●●●**  
maten 134-140-146-152-158-164

zie pag. 52, 73



**19 BODY-WARMER ●●●**  
maten 134-140-146-152-158-164

zie pag. 52



**20a BROEK ●●●**  
maten 134-140-146-152-158-164

zie pag. 54



**20b BROEK ●●●**  
maten 134-140-146-152-158-164

zie pag. 52



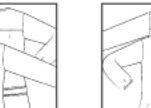
**21 SWEATER ●●●**  
maten 134-140-146-152-158-164

zie pag. 53, 70



**22a JURK ●●**  
maten 134-140-146-152-158-164

zie pag. 55



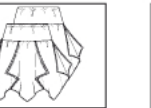
**22b TOP ●●**  
maten 134-140-146-152-158-164

zie pag. 73



**23 ROK ●●**  
maten 134/140-146/152-158/164

zie pag. 53



**24 PONCHO ●**  
maten 50/56-62/68-74/80

zie pag. 10



**25 ROKJE ●**  
maten 50/56-62/68-74/80

zie pag. 11



**26 SPEELPAK ●●**  
maten 50/56-62/68-74/80

zie pag. 12



**27 VESTJE MET KORTE MOUW ●**  
maten 104/110-116/122-128/134

zie pag. 7



**28 TRUI ●●**  
maten 134/140-146/152-158/164

zie pag. 54



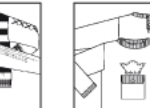
**29 MOUWLOOS VEST ●**  
maten 134/140-146/152-158/164

zie pag. 54



**30 JONGENS TRUI ●●●**  
maten 104/110-116/122-128/134

zie pag. 8



**31 BABYTRUI ●●**  
maten 68/74-80/86-92/98

zie pag. 19



**32 KINDERKAMER BOEK TILDA'S WINTER-WONDERLAND**  
• jongenskamer  
• meisjeskamer

zie pag. 57 1/m 61



**33 CUSTOMIZE**  
• ledikanlaken  
• dekbed kids

zie pag. 66 1/m 69



**34 SJAAL (1 maat)**

zie pag. 72